

PRODUCT SHEET

# Sage 200cloud Standard

A solution for growing businesses

Summer 2020

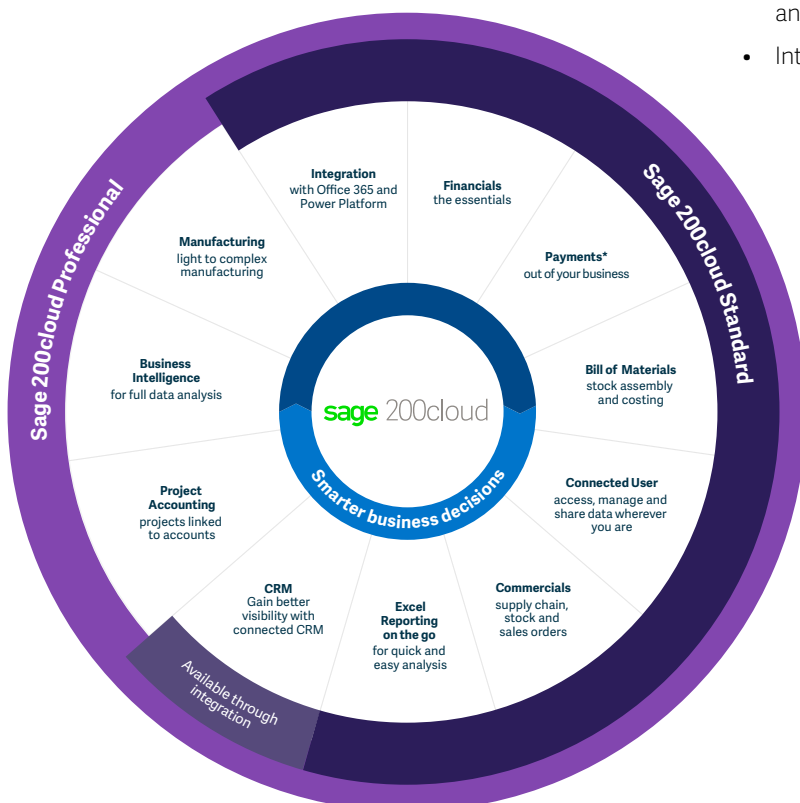
Access the insight to drive your future business growth with a straightforward accounting solution that includes the essential financial and stock capabilities you need. As your business grows you need the reassurance that the technology that's helped drive your early success can grow with you.

Sage 200cloud is the next step from Sage 50cloud, with enhanced capability to manage your finances, customers and business insight in one solution – and propel your business forward.

Sage 200cloud Standard is a scaled version of Sage 200cloud Professional offering an affordable option for businesses who've outgrown Sage 50 Accounts. This helps to bridge the gap as your business grows between the Sage 50 software you've built on, with a more complete accounting solution that can handle more transactions and provide greater functionality.

### Sage 200cloud Standard: at a glance...

- Cloud-based data storage
- Always up-to-date via automatic updates
- The essential financials package to manage cashflow
- Commercial insight via stock data, Purchase Order Processing and Sales Order Processing, price lists and supply chain management
- Simple dashboards and customisable views for data mining in the office or on the go
- Better reporting and more detailed analysis, all accessible online
- Manage and pay suppliers directly from the software
- Integrated invoice payments that work seamlessly in your software
- Sage 200 Services to give you access to the advice and insight you need to help grow your business
- Integrates with Sage CRM (additional module)



**The complete solution from Sage 200cloud:**  
**Easy to install and adapt, Sage 200cloud offers the choice and flexibility to fit the needs of your business as it changes and grows.**

- Sage 200cloud Standard
- Sage 200cloud Professional

includes all features

A full range of services are also included with Sage 200cloud.

\*The Sage Payments service is provided by Sage Payments (UK) Ltd which is authorised by the Financial Conduct Authority under the Electronic Money Regulations 2011 (Register Reference: 900180) for the issuing of electronic money. Not available in the Republic of Ireland.

# Sage 50cloud Accounts Professional and Sage 200cloud: feature comparison details

Features/Tools	Sage 50cloud Accounts Professional	Sage 200cloud Standard	Sage 200cloud Professional
<b>Proposition, getting started and setup</b>			
<b>Online</b>	via Office 365 and Sage Drive	Hybrid cloud	Limited to designated functions
<b>Regular product updates</b>	✓	✓ - Auto Deployed	✓
<b>Multi-user and access rights</b>	Max 20*	Max 200	Unlimited ~
<b>Multi-business</b>	Unlimited#	✓	✓
<b>Nominal structure</b>	Single (Depts. Only)	Hierarchical – cost centres and departments	Hierarchical – cost centres and departments
<b>Mobile app</b>	For Office 365 or cloud storage	Selected functionality via app	Selected functionality via app
<b>Cloud collaboration with accountant</b>	✓ (via Sage Drive)	✓ (via Accountant User)	✓
<b>Secure cloud access and backup</b>	✓	✓	✓
<b>Office 365 integration</b>	✓*	✓*	✓*
<b>Modify/customise chart of accounts</b>	✓	✓	✓
<b>Summary dashboard</b>	✓	✓	✓
<b>Working with your customers and suppliers</b>			
<b>Issue quotes</b>	✓	✓	✓
<b>Issue sales invoices</b>	✓	✓	✓
<b>Email invoices</b>	✓	✓	✓
<b>Invoice/quote customisation</b>	✓	✓	✓
<b>Recurring receipts and payments</b>	✓	✓	✓
<b>Recurring invoices</b>	✓	✓	✓
<b>Sales and purchase ledger</b>	✓	✓	✓
<b>Sales order requirements</b>	Create orders, allocate stock, update stock levels, despatch in several stages, create despatch notes	Complex - e.g. cancelled order line history, allocate by order priority, requested and promised delivery dates	Complex - e.g. cancelled order line history, allocate by order priority, requested and promised delivery dates
<b>Purchase order requirements</b>	Create purchase orders, stock updated when goods received, deliver goods in several stages, print goods received notes	Complex POP requirements e.g. back-to-back ordering, cancelled order line history, rules-based batch purchase order generation	Complex POP requirements e.g. back-to-back ordering, cancelled order line history, rules-based batch purchase order generation
<b>Issue delivery notes</b>	✓	✓	✓
<b>Sales &amp; purchase returns</b>	✗	✓	✓
<b>Managing your Operations</b>			
<b>Payments integration</b>	SagePay PayPal GOCARDLESS Stripe GooglePay ApplePay Salary & Supplier Payments powered by Modulr	SagePay PayPal GOCARDLESS Stripe GooglePay ApplePay Salary & Supplier Payments powered by Modulr	SagePay PayPal GOCARDLESS Stripe GooglePay ApplePay Salary & Supplier Payments powered by Modulr
<b>Bank reconciliation</b>	✓	✓	✓
<b>Direct bank feeds</b>	✓	✓	✓
<b>Bank feed rules</b>	✓	✓	✓
<b>Bank feed alerts for transactions which haven't properly matched</b>	✓	✓	✓

\* Requires additional software & associated licences

~ Guidance available on best practice

# Pricing options apply, please refer to licence agreements for relevant rules

# Sage 50cloud Accounts Professional and Sage 200cloud: feature comparison at a glance

Features/Tools	Sage 50cloud Accounts Professional	Sage 200cloud Standard	Sage 200cloud Professional
<b>Reporting options</b>			
Trial balance	✓	✓	✓
Periodic trial balance	✓	✓	✓
Audit trail	✓	✓	✓
Chart of accounts	✓	✓	✓
Profit and loss	✓	✓	✓
Balance sheet	✓	✓	✓
Cashflow statement and cashflow forecast	✓	✓	✓
Unreconciled bank transactions report	✓	✓	✓
VAT returns	✓	✓	✓
Making Tax Digital ready	✓	✓	✓
Aged debtors	✓	✓	✓
Aged creditors	✓	✓	✓
Receipts and payments daybook	✓	✓	✓
Sales and purchase daybooks	✓	✓	✓
Nominal activity summary/detailed	✓	✓	✓
Stock reports	✓	✓	✓
Full closed period accounting	✗	✓	✓
Number of accounting periods	12 (fixed)	12 (flexible)	Up to 20
Multi-currency	Foreign bank account	Foreign bank ledger Foreign purchase ledger Foreign sales ledger	Foreign bank ledger Foreign purchase ledger Foreign sales ledger
Consolidation	Base currency only	Base currency only	Multi-currency
Sage Intelligence reporting	✓	Power BI connectivity	Power BI connectivity
<b>Managing your cashflow, assets and projects</b>			
Track finances	✓	✓	✓
Create budgets and compare to actual performance	Advanced	Advanced	Advanced
Journals	✓	✓	✓
Covered by cashflow statement and cashflow forecast line	✓	✓	✓
Income, expenses & profit	Advanced	Advanced	Advanced
Project costing	✓	✗	✓
Fixed assets	✓	✓	✓
Stock control	Intermediate	Advanced	Advanced
Price & discount management	Customer/Supplier pricing, % discount, value and quantity discounts (limited to 10)	Customer/Supplier pricing, % discount, value and quantity discounts (unlimited), discount on product groups (limited)	Customer/Supplier pricing, % discount, value and quantity discounts (unlimited), discount on product groups (limited)
<b>Managing your operations</b>			
Payroll integration	Sage 50 Payroll	Sage 50 Payroll	Sage 50 Payroll
CRM integration	Sage CRM with ISV Connector	Sage CRM with ISV Connector	Sage CRM with ISV Connector
Manufacturing	✓ (with Sage 50 integrated product)	✗	Manufacturing Module via ISV

# Sage 200cloud Standard: the next step for your business from Sage 50cloud

Sage 200cloud Standard is the ideal solution when your business has outgrown Sage 50cloud but isn't yet ready for a fully-customised set up in Sage 200cloud Professional. Talk to your partner about the best fit for your business and they'll advise you on the right time to move from Sage 50cloud.

## Here are some of the key differences:

- **Online:** The product is online and hosted within Microsoft Azure which negates the need for servers and can be accessed from different sites
  - **SQL Database:** Sage 200cloud is built on a more robust database and can handle more concurrent users and more transactions
  - **3-tier Nominal Structure:** Analyse your business using Nominal Code, Cost Centre and Department all under the Nominal Ledger
  - **Closed Period Accounting:** 12 flexible accounting periods with the ability to close down module-by-module at different times of the month
  - **Five customisable analysis fields:** Within Customers, Suppliers, Stock, Nominal, Sales Orders and Purchase Orders you have five additional analysis fields that can be used for whatever you like
  - **Multi-Stock Location:** Create one product record with stock quantities showing via location. You can also specify bins per locations (e.g. Aisle 9 Level 3)
  - **Back-to-back ordering:** Create purchase orders from a sales order, meaning both are linked together so when stock arrives it is automatically allocated to the sales order
- **Purchase Requisitions and Remote Purchase Order Authorisation:** Raise a purchase requisition and remotely authorise purchase orders over levels set by administration
  - **Additional Excel reporting:** Report templates built into the software to filter information and show you whatever you need without the need to run multiple reports
  - **Multi-Currency:** Process foreign receipts and payments directly into a GBP back account without the need to set up dummy bank accounts. You can also process payments and receipts in any currency against the original invoice (e.g. US Dollar invoice received, customer paid in GBP)

## Payments integrations



From £298.00 per month (exc. VAT)

For more information **Speak to your partner today.**

©2020 The Sage Group plc or its licensors. Sage, Sage logos, Sage product and service names mentioned herein are the trademarks of The Sage Group plc or its licensors. All other trademarks are the property of their respective owners. NA/WF 183498.